



P R O D U C T S

DC100

Data Concentrator

The SCADALink DC100 Data Concentrator is a powerful and easy to configure device that can be used for data concentration, I/O point-to-multipoint telemetry over radio systems such as SMX-900 or a combination of both data concentration and I/O telemetry.

It's I/O bus interface enables connection of up to 8 SCADALink I/O modules and with built-in serial and ethernet ports, it can act as a submaster to a SCADA Host, collecting data from remote sites in a hardwired system or PLC systems that cannot poll.



FEATURES

- 5 Serial Ports:
 - COM0 - Programming Port (RS232)
 - COM 1 - Host Port (RS232)
 - COM 2 - Modbus Polling Port (Muxed RS232 & RS485)
 - COM 3 - Modbus Slave (RS232)
 - COM 4 - Not used
- 100 Base-T Ethernet Port (Auto Detect)
- TCP, UDP, Modbus TCP
- Interface to SMX family of products: SMX-900 Radio and I/O Expansion Modules: AI4, A04, DI8, DO8, A8D4
- Wide Input Voltage Input (10 - 30VDC)
- Industrial Temp (-40 Deg. C to 70 Deg. C)
- CSA Class I, Div 2

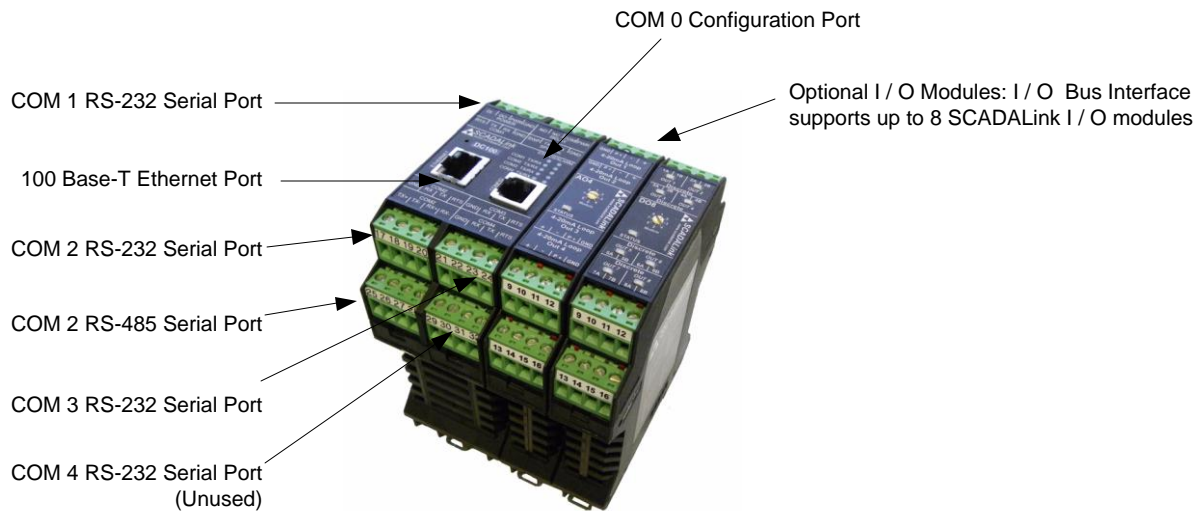
OPERATING MODES

1. Point Multipoint I/O Telemetry
2. Point Multipoint I/O Telemetry with SCADA Interface
3. Data Concentration to/from PLC/RTU/DCS

DC100

Data Concentrator

The SCADALink DC100 Data Concentrator is a member of the SCADACON family of products consisting of a flexible and expanding range of controllers, communications and I/O modules. The DC100 interfaces to all SMX-900 family products including SMX-900 Spread Spectrum Radio as well as I/O modules.

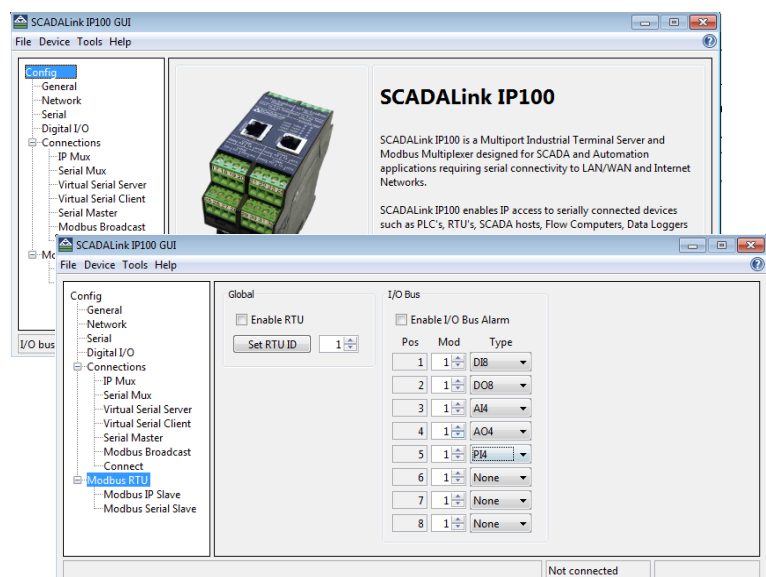


OPTIONAL SCADACON I/O MODULES

MODULE	INTERFACE
SMX-900; 900Mhz License-Free Spread Spectrum Radio	RS-232
AI4; 4 Analog Inputs, 4-20mA, 16 Bits	I/O Bus
AO4; 4 Analog Outputs, 4-20mA, 16 Bits	I/O Bus
DI8; 8 Digital Inputs	I/O Bus
DO8; 8 Digital Outputs	I/O Bus
A8D4; 4 AI/DI, 4 AI/DI/PI, 4 DO, 4-20mA, 10 Bits	I/O Bus

SIMPLE GUI CONFIGURATION

- No Special Programming Knowledge Required
- Windows-based Configuration Software
- GUI Transfers:
 - I/O to I/O
 - I/O to Register
 - Register to I/O
 - Register to Register
- Polling Frequencies, Timeouts, Retries and Failure Default States are GUI configured
- DC100 Configuration File can be Saved, Uploaded or Downloaded



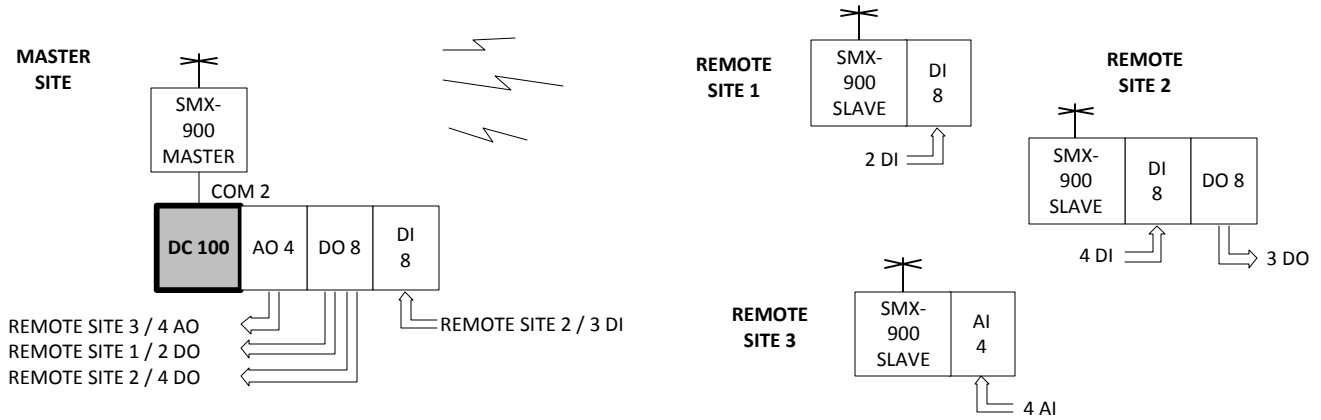


APPLICATIONS

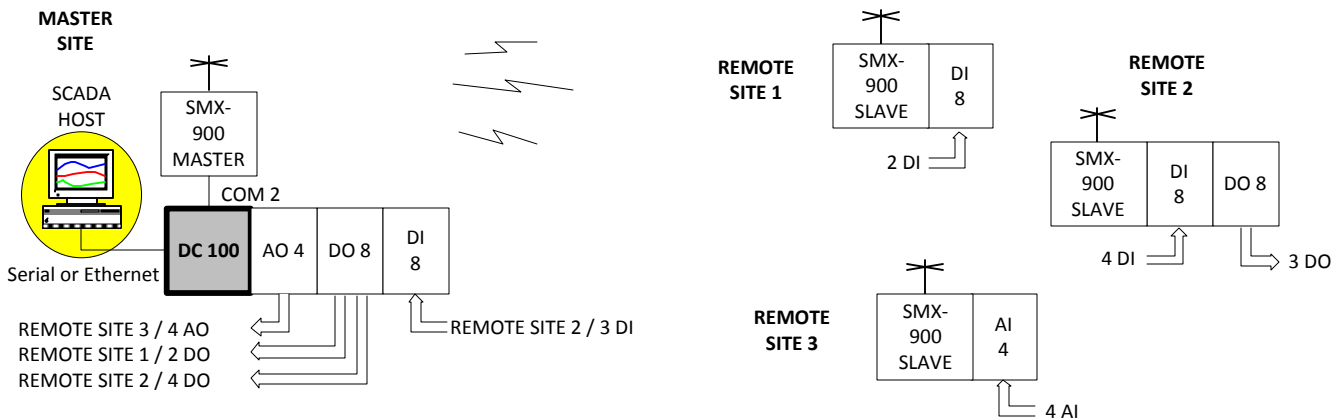
DC100

Data Concentrator

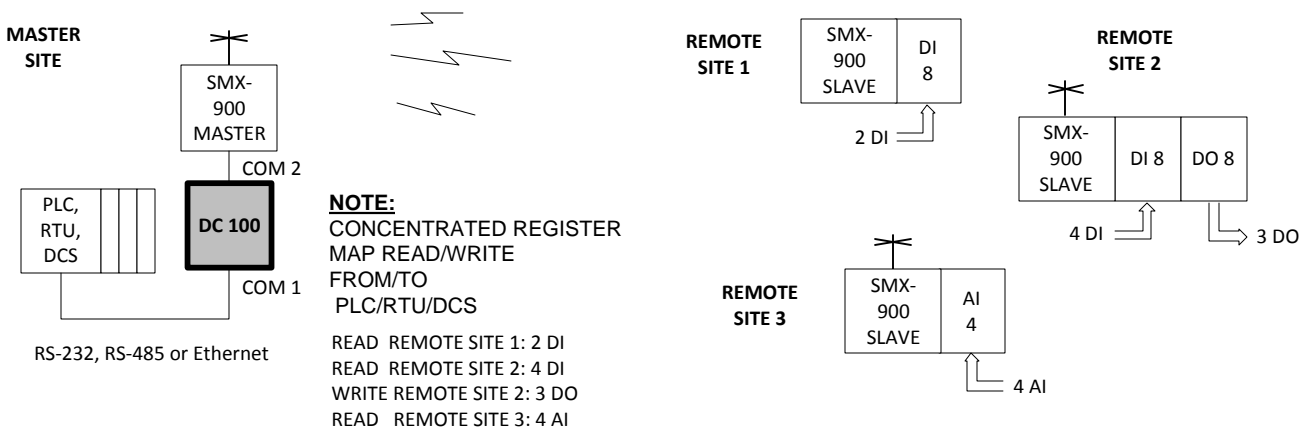
POINT- MULTIPOINT I/O TELEMETRY (WITH SMX-900 WIRELESS I/O)



POINT- MULTIPOINT I/O TELEMETRY AND SCADA INTERFACE (WITH SMX-900 WIRELESS I/O)



DATA CONCENTRATION WITH PLC / RTU / DCS (WITH SMX-900 WIRELESS I/O)





SPECIFICATIONS

DC100

Data Concentrator

General

Power Requirements	10-30Vdc; Operating Current: 50 mA@12V or 25 mA@24VDC. Rev. Polarity protected Current for Connected Loads is additional to Operating Current
Relay Bus PWR OP	RELAY PWR to POWER GND: Sourced Vin - 0.5Vdc / 250mA max
Battery Backup	For RAM data and Realtime clock retention
Physical Size	4.5" x 1.8" x 3.9" (114mm x 45mm x 99mm)
Environmental	Operating Temperature: -45 Deg.C to 70 Deg. C Relative Humidity: Up to 90% RH (Non Condensing)
Mounting	35mm DIN Railmount
Status LEDs	Status, Alarm, TX/RX for COM1, COM2, COM3, COM4
Terminal Block(TB)	4 Pin Removable Screw Terminals, Wire Gauge: 12 -24 AWG

Communications

Serial Ports	All Serial Ports: Async, Data bits: 7/8, Parity: Odd/Even/No, Stop bits: 1/2, Flow Control: RTS/RTS&CTS/None COM 0: RS-232, Configuration Port, 9600 Baud, RJ-11 COM 1: RS-232, Host Port, TX, RX, RTS, GND, 4 Pin Terminal Block COM 2: Simultaneous RS-232 and RS-485 Master Port, Up to 115KBaud RS-232: TX, RX, RTS, GND, 4 Pin Terminal Block RS-485: TX+, TX-, RX+, RX-, 4 Pin Terminal Block COM 3: RS-232, MB Slave Port, TX, RX, RTS, GND, Up to 115KBaud, 4 Pin Terminal Block COM 4: Unused
Ethernet Port	ETH0: 10/100Base-T Ethernet Port, RJ-45 with Status Indicators

Built-in I/O

Digital Input	Dry contact switch to Gnd, ESD protected, +30Vdc clamped, 125mA resettable fuse
Digital Output	Open Drain Output, 30VDC Sinking, 50mA, ESD protected, 125mA resettable fuse
Relay Output(Alarm)	Isolated Output 50mA (ac/dc) max @ 30Vdcmax, NO/NC Contact
Switched PWR OP	SPECIAL SWP, Vin -0.5Vdc / 2.0Amax, reverse polarity protected

Agency Approvals

CSA	Class I Div 2, Group C,D, T3C @ Ta = -40 to 70 Deg. C
------------	-------------------------------------------------------



**BENTEK
SYSTEMS**

315 - 3750 46th Ave. S.E
Calgary Alberta T2B 0L1 Canada
ph:(403)243-5135 fax:(403)243-5165
www.scadalink.com
sales@scadalink.com