



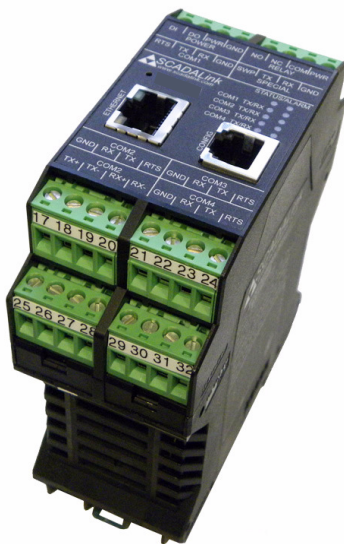
P R O D U C T S

IP100

Modbus Mux / SCADA Terminal Server

The SCADALink IP100 is a Serial-to-Ethernet Gateway, Multiport Industrial Terminal Server and Multiplexer designed for SCADA and automation applications requiring Serial Connectivity of LAN/WAN and Internet Networks. The IP100 enables IP access to serially connected devices such as PLC's, RTU's, SCADA hosts, Flow Computers, Data loggers and Radio Modem systems.

Unique features such as multiple host connections and simultaneous TCP, UDP and Modbus TCP ports gives it flexibility and scalability in automation and SCADA applications. A built-in Monitor tool enables serial communications diagnostics by providing users with realtime protocol analysis capabilities on selected serial channels. Configuration is done via simple windows GUI or ASCII Terminal. The IP100 is a compact replacement for the SCADALink IP Gateway with additional ports and expanded functionality.



FEATURES

- 5 Serial Ports - 4RS-232, 1 RS-232/RS-485
- 100 Base-T Ethernet Port (Auto Detect)
- TCP, UDP & Modbus TCP
- Supports Multiple Operating Modes
- Configurable via GUI or ASCII Terminal
- Protocol Monitor displays Serial Port Traffic
- Digital I/O for Comm Reset or Control
- Wide Input Voltage Input (10 - 30VDC)
- Industrial Temp (-40 Deg. C to 70 Deg. C)
- CSA Class I, Div 2
- DIN Rail Mount

OPERATING MODES

1. Modbus IP
2. Virtual Serial Server
3. Virtual Serial Client
4. Connect
5. Serial Mux
6. Serial Master

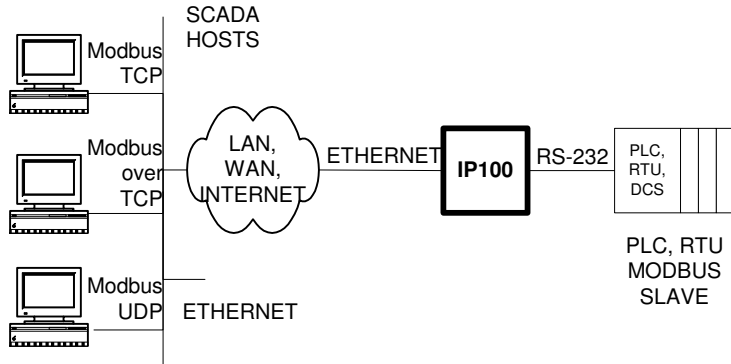


APPLICATIONS

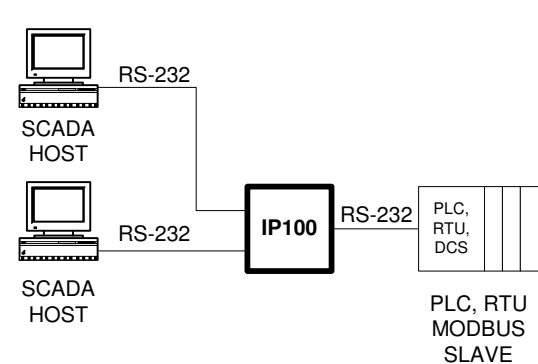
IP100

Modbus Mux / SCADA Terminal Server

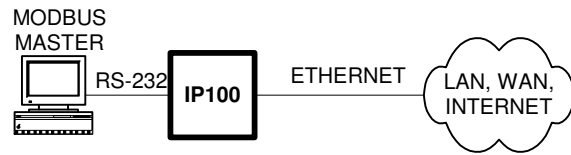
MODBUS IP



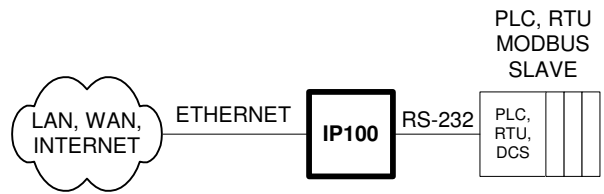
SERIAL MUX



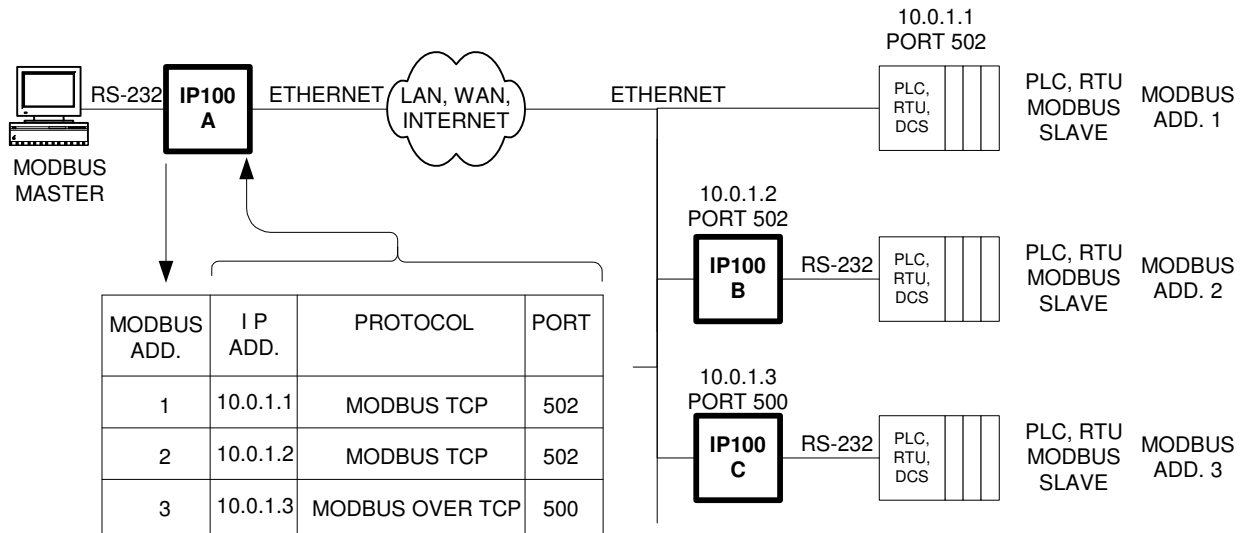
VIRTUAL SERIAL CLIENT



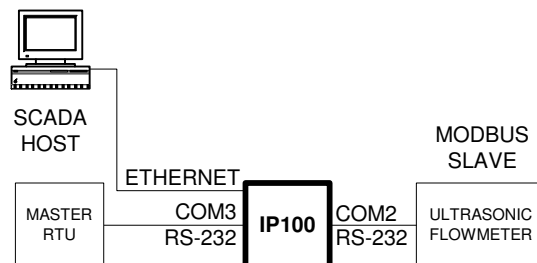
VIRTUAL SERIAL SERVER



MODBUS SERIAL MASTER



CONNECT



GUI / MONITOR

IP100

Modbus Mux / SCADA Terminal Server

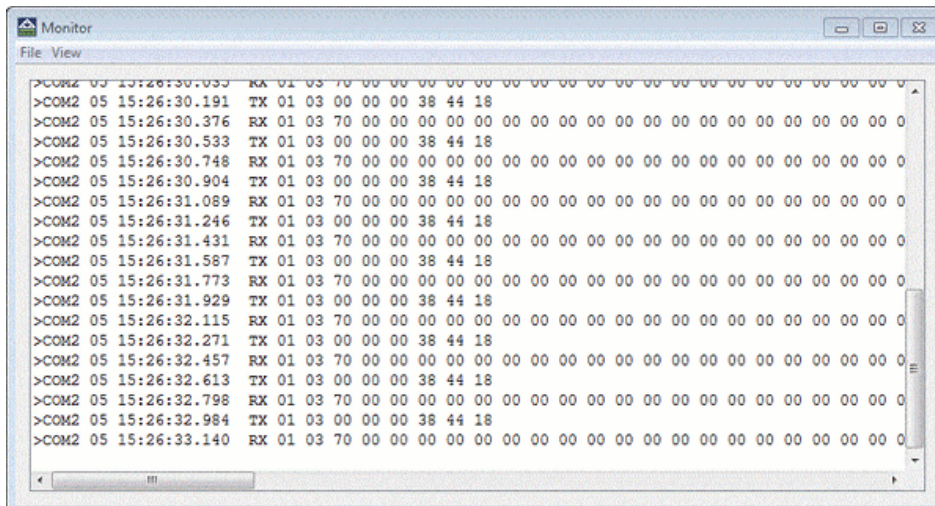
GUI

The IP100 GUI is a windows based application used to configure, save and restore IP100 settings. In addition, the GUI provides access to the IP100 Monitor for serial port protocol analysis and control of onboard digital I/O. It is connected to the IP100 via ethernet or serial cable to COM0 or COM1.



PROTOCOL MONITOR

The IP100 has a Monitor function which enables the user to monitor serial communications traffic on any of the IP100's 5 serial ports. The Monitor function displays in the IP100 GUI or in an ASCII Terminal connected to the IP100 and is useful for diagnosing and troubleshooting SCADA Communications.





SPECIFICATIONS

IP100

Modbus Mux / SCADA Terminal Server

General

Power Requirements	10-30Vdc; Operating Current: 50 mA@12V or 25 mA@24VDC. Rev. Polarity protected Current for Connected Loads is additional to Operating Current
Relay Bus PWR OP	RELAY PWR to POWER GND: Sourced Vin - 0.5Vdc / 250mA max
Battery Backup	For RAM data and Realtime clock retention
Physical Size	4.5" x 1.8" x 3.9" (114mm x 45mm x 99mm)
Environmental	Operating Temperature: -45 Deg.C to 70 Deg. C Relative Humidity: Up to 90% RH (Non Condensing)
Mounting	35mm DIN Railmount
Status LEDs	Status, Alarm, TX/RX for COM1, COM2, COM3, COM4
Terminal Block(TB)	4 Pin Removable Screw Terminals, Wire Gauge: 12 -24 AWG
Hardware Reset Pushbutton	Located above ethernet port

Communications

Serial Ports	COM0-COM4: Async, Data bits: 7/8, Parity: Odd/Even/No, Stop bits: 1/2, up to 115Kbps COM1-COM4: Flow Control: RTS/RTS&CTS/None COM0: No Flow Control COM0: RS-232, Firmware Loading or General Port: TX, RX, GND, RJ-11 COM1: RS-232, Configuration Parameter or General port, TX, RX, RTS, GND, 4 Pin Terminal Block COM2: Simultaneous RS-232 and RS-485, General Port, 4 Pin Terminal Block RS-232: TX, RX, RTS, GND RS-485: TX+, TX-, RX+, RX- COM3: RS-232, TX, RX, RTS, GND, 4 Pin Terminal Block COM4: RS-232, TX, RX, RTS, GND, 4 Pin Terminal Block
Ethernet Port	ETH0: 10/100Base-T Ethernet Port, RJ-45 with Status Indicators: General or Telnet

Built-in I/O

Digital Input	Active low, switched to Gnd, ESD protected, +30Vdc clamped, 125 mA resettable fuse
Digital Output	Open Drain Output, 30VDC Sinking, 50mA, ESD protected, 125mA resettable fuse
Relay Output(Alarm)	Isolated Output 50mA (ac/dc) max @ 30Vdc max, NO/NC Contact
Switched PWR OP	SPECIAL SWP, Vin -0.5Vdc / 2.0A max, reverse polarity protected

Agency Approvals

CSA	Class I Div 2, Group C,D, T3C @ Ta = -40 to 70 Deg. C
------------	---



**BENTEK
SYSTEMS**

315 - 3750 46th Ave. S.E
Calgary Alberta T2B 0L1 Canada
ph:(403)243-5135 fax:(403)243-5165
www.scadalink.com
sales@scadalink.com