



The SCADALink SAT110 is a portable, environmentally-sealed, battery-powered satellite RTU and Alarm Callout unit with global coverage. It is used in remote monitoring applications where power is unavailable or minimal installation is required. Integral battery power and vibration sensor allows for easy deployment in Run/No Run monitoring of compressors and generators with no field wiring. Built-in I/O allows connection of alarm contacts and switches while RS232 allows connection to serially connected smart devices such as PLC's, RTU's, Flow Computers, Data Loggers and Power Meters inaccessible by terrestrial communication. The SAT110 is integrated with the SCADALink SatSCADA Server to provide SCADA data communications, RTU, and alarm callout services to a variety of SCADA client devices. Customer SCADA Host can securely communicate to remote SAT110 Terminal via SatSCADA Client / SatSCADA Server without need for a VPN.

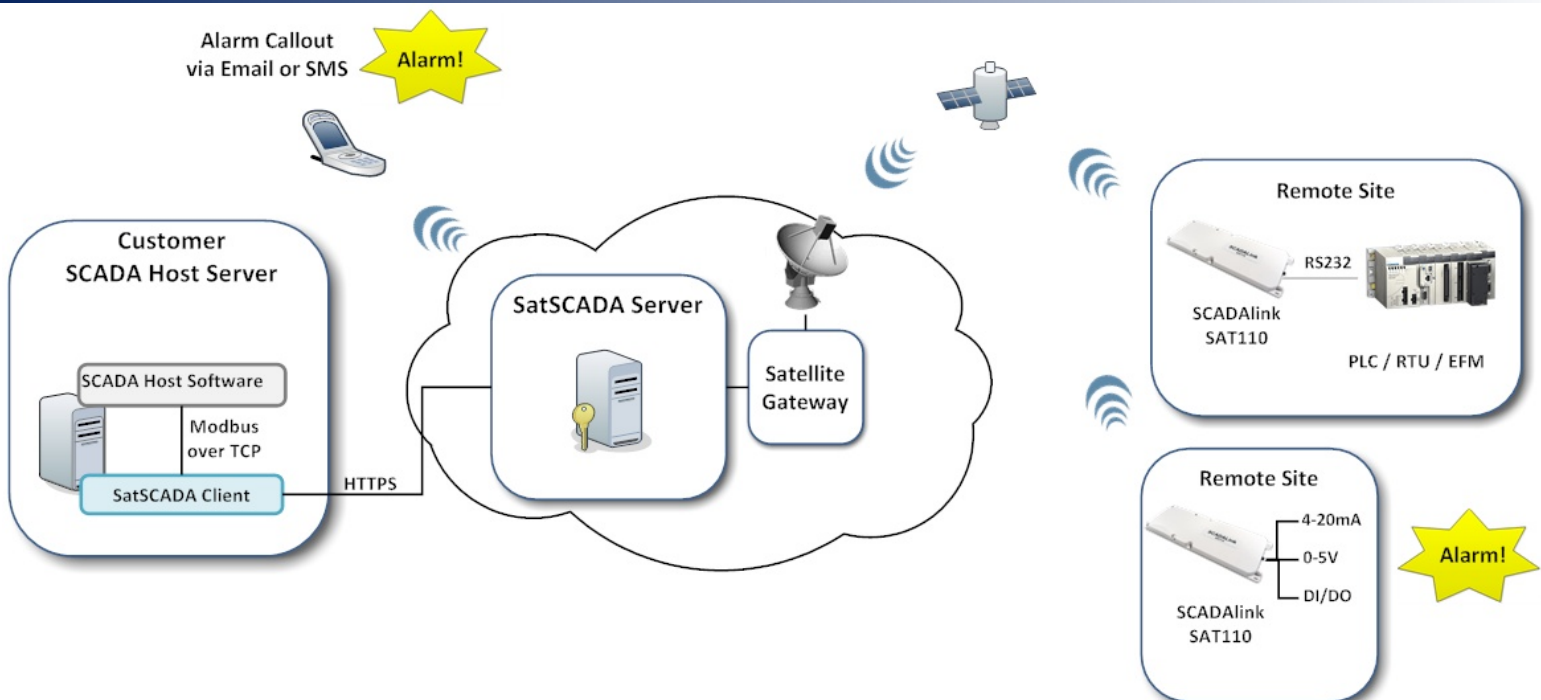
## FEATURES

- Global coverage via Inmarsat Network
- Built-in battery with up to 2 year life
- RS232 serial port
- Onboard I/O: 3 Analog Input or Digital Input/Output
- 3-axis accelerometer for motion / vibration sensing
- Low Power operation: 100uA sleep current
- Wide Vin range: 9 to 32 VDC
- Class I Div 2
- Integration to SatSCADA Server for SCADA data communications, RTU, and alarm callout services

## APPLICATIONS

- Oil and Gas Production
- Pipeline Monitoring
- Distribution Automation
- Water Systems
- Environmental Monitoring
- Geotechnical Monitoring
- Security
- Tower Light Monitoring

## SYSTEM DIAGRAM



### SPECIFICATIONS

#### Satellite Communication

Satellite Service	2 way IsatData Pro
Coverage	Global
From - Mobile Message	6,400 Bytes
To - Mobile Message	10,000 Bytes
Typical Latency	<15 ms, 100 Bytes
Elavation Angle	+20 to +90 Deg
Frequency	Rx: 1525.0 - 15.59.0 Mhz Tx: 1626.5 - 1660.5 Mhz
EIRP	7.0 dBW

#### GPS

Acquisition Time	Hot 1 s, Cold 27 s
Sensitivity	2.5 m (Horizontal CEP) Tracking: -159 dBm

#### Interface

Input/Outputs	3 Analog Input or Digital In/Out
Serial	1 RS232

#### Sensor

Motion	3 axis accelerometer
--------	----------------------

#### Electrical

Input Voltage	+9 to 32VDC
Load Dump Protection	+150VDC
Power Consumption	Rx: 8.3mA, Rx with GPS: 40mA, (Typical@12VDC) Tx: 0.75A, Sleep: 100uA
Battery Cells	12 AA Cells
Battery Chemistry	LiFeS2

#### Charging

Current	1.33A (@12V)
Time	4 Hours (max.)
Temperature	-40 to 60 Deg. C

#### Environmental

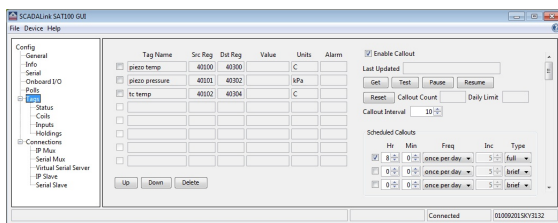
Dust & Water Ingress	IP67
Mass	1.3Kg (inc. battery)

#### Certification

Regulatory	CE, FCC, IC
Hazardous Location	Class I Div 2
Others	RoHS

### SAT110 GUI

SAT110 GUI is used to configure the SAT110 locally or remotely.



### DIMENSIONS



### ORDERING INFORMATION

SAT110	Low Power Satellite RTU / Alarmdialer unit
SAT110-KIT1	SAT110 with Termination Junction Box, Bracket and 5 Meter Cable to Flying Leads
SAT110-KIT2	Same as KIT1 but without Junction Box
SAT110-CAB5-CB	5m Liquid Tite Cable, connector to flying leads
SATXX-JB	Junction Box with Termination Board, Nema 4X
SAT-1XX-TB1	Termination Board for Power & IO, CiD2