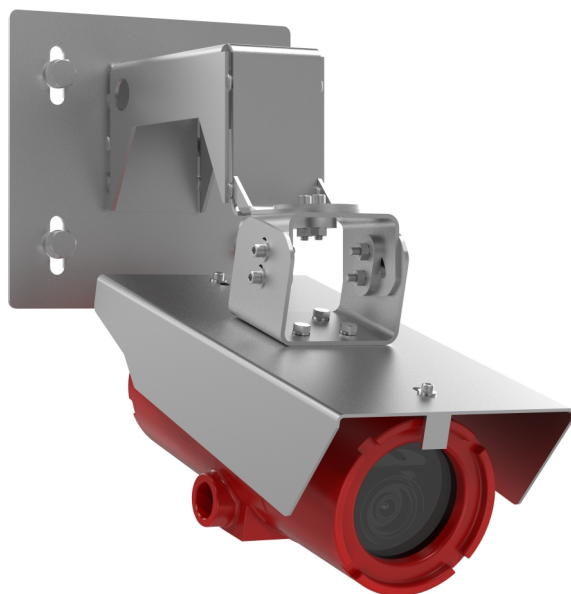


F101-A XF Q1785 Explosion-Protected Network Camera

First-class fixed box for hazardous areas

F101-A XF Q1785 features a 32x optical zoom for 2 MP/HDTV 1080p image quality up to 60 fps. It's certified worldwide with Class I/II/III, Division 1 and Zone 1 for use in explosion-prone applications. It's enclosed in an IP66 rated aluminum red housing and can withstand extreme temperatures from -40 °C to 60 °C (-40 °F to 140 °F). It comes with AXIS Guard Suite pre-installed and Active Gatekeeper. It includes Electronic Image Stabilization, Forensic WDR, Lightfinder, barrel distortion correction and scene profiles. Plus, built-in PoE support and Zipstream for simplified installation and lower bandwidth and storage requirements.

- > **Certified for Class I/II/III, Division 1 and Zone 1**
- > **32x optical zoom**
- > **2 MP, HDTV 1080p at up to 60 fps**
- > **Forensic WDR and Lightfinder**
- > **-40 °C to 60 °C (-40 °F to 140 °F)**



F101-A XF Q.1785 Explosion-Protected Network Camera

Camera		Memory	1 GB RAM, 512 MB Flash
Image sensor	1/2.8" progressive scan RGB CMOS	Power	Camera: Power over Ethernet (PoE) IEEE 802.3af/802.3at Type 1 Class 3, typical 7.7 W, max 8.7 W Heater: 12–30 V AC/DC, 25 W
Lens	Varifocal 4.3–137 mm, F1.4–4.0 Horizontal field of view: 60°–2.3° Vertical field of view: 39°–1.3° Autofocus	Connectors	2 x 3/4" NPT cable entries RJ45 10BASE-T/100BASE-TX PoE 2-pin terminal block connector for heater
Minimum illumination	Color: 0.16 lux at 50 IRE F1.4 B/W: 0.03 lux at 50 IRE F1.4	Storage	Support for microSD/microSDHC/microSDXC card Support for SD card encryption Support for recording to network-attached storage (NAS) For SD card and NAS recommendations see axis.com
Shutter time	1/66500 s to 1 s	Operating conditions	Hazardous location operating temperature: Zone system: -50 °C to 60 °C (-58 °F to 140 °F) Class/Division system: -40 °C to 60 °C (-40 °F to 140 °F) Humidity 10–100% RH (condensing)
Video		Storage conditions	-40 °C to 65 °C (-40 °F to 149 °F)
Video compression	H.264 (MPEG-4 Part 10/AVC) Baseline, Main and High Profiles Motion JPEG	Approvals	EMC EN 55032 Class A, FCC Part 15 Subpart B Class A, ICES-003 Class A, VCCI Class A, RCM AS/NZS CISPR 32 Class A, EN 55024, EN 61000-6-1, EN 61000-6-2 Environment ANSI/NEMA 250 4X, ANSI/IEC/EN/CAN/CSA-C22.2 60529 IP66, CSA-C22.2 No. 0.5, CSA-C22.2 No. 25, CSA-C22.2 No. 30, CSA-C22.2 No. 94.2 Explosion FM Class 3600:2018, FM Class 3615:2018, FM Class 3616:2011, ANSI/ISA/EN/IEC/CAN/CSA-C22.2 60079-0, ANSI/UL/EN/IEC/CAN/CSA-C22.2 60079-1, ANSI/UL/EN/IEC/CAN/CSA-C22.2 60079-31 Network NIST SP500-267
Resolution	1920x1080 HDTV 1080p to 160x90 Maximum pixel density with 32x optical zoom: 25 m (82 ft): 1912 px/m 50 m (164 ft): 956 px/m 250 m (820 ft): 191 px/m	Certifications	USA: Class I Division 1 Groups BCD T6 Ta= -40°C to 60°C, Type 4X, IP66 Class II/III Division 1 Groups EFG Ta= -40°C to 60°C, Type 4X, IP66 Class I, Zone 1, AEx db IIB+H2 Gb Ta= -50°C to 60°C, Type 4X, IP66 Zone 21, AEx tb IIIC Db Ta= -50°C to 60°C, Type 4X, IP66 Certificate: FM18US0262X Canada: Class I Division 1 Groups BCD T6 Ta= -50°C to 60°C, Type 4X, IP66 Class II/III Division 1 Groups EFG Ta= -50°C to 60°C, Type 4X, IP66 Class I, Zone 1, Ex db IIB+H2 T5 Gb Ta= -50°C to 60°C, Type 4X, IP66 Zone 21, Ex tb IIIC T85°C Db Ta= -50°C to 60°C, Type 4X, IP66 Certificate: FM18CA0126X ATEX: II 2 G Ex db IIB+H2 T5 Gb Ta= -50°C to 60°C, IP66 II 2 D Ex tb IIIC T85°C Db Ta= -50°C to 60°C, IP66 Certificate: FM18ATEX0073X IECEX: Ex db IIB+H2 T5 Gb Ta= -50°C to 60°C, IP66 Ex tb IIIC T85°C Db Ta= -50°C to 60°C, IP66 Certificate: IECEX FMG 18.0029X
Frame rate	With WDR: Up to 30/25 fps (60/50 Hz) in all resolutions Without WDR: Up to 60/50 fps (60/50 Hz) in all resolutions	Dimensions	13.85 x 7.17 x 5.76 in (352 x 182 x 146 mm)
Video streaming	Multiple, individually configurable streams in H.264 and Motion JPEG Zipstream technology in H.264 Controllable frame rate and bandwidth VBR/MBR H.264	Weight	14 lb (6.2 kg)
Image settings	Saturation, contrast, brightness, sharpness, Forensic WDR, defogging, white balance, exposure mode, exposure zones, compression, mirroring of images, electronic image stabilization, barrel distortion correction, text and image overlay, dynamic text and image overlay, privacy masks Rotation: auto, 0°, 90°, 180°, 270° including Corridor Format Scene profiles: forensic, vivid, traffic overview	Included accessories	Installation Guide, Windows® decoder 1-user license, Weathershield, AXIS Surveillance microSDXC Card 128 GB
Pan/Tilt/Zoom	Digital ptz, 32x optical zoom, 12x digital zoom, preset positions	Optional accessories	Wall Mount, Pole Mount, Corner Mount For more accessories, see axis.com
Network		Video management software	AXIS Companion, AXIS Camera Station, video management software from Axis Application Development Partners available on axis.com/vms
Security	Password protection, IP address filtering, HTTPS ^a encryption, IEEE 802.1X ^a network access control, digest authentication, user access log, centralized certificate management, brute force delay protection	Languages	English, German, French, Spanish, Italian, Russian, Simplified Chinese, Japanese, Korean, Portuguese, Traditional Chinese
Supported protocols	IPv4, IPv6 USGv6, HTTP, HTTPS ^a , SSL/TLS ^a , QoS Layer 3 DiffServ, FTP, SFTP, CIFS/SMB, SMTP, Bonjour, UPnP [®] , SNMP v1/v2c/v3 (MIB-II), DNS, DynDNS, NTP, RTSP, RTP, SRTP, TCP, UDP, IGMP, RTCP, ICMP, DHCP, ARP, SOCKS, SSH, LLDP	Warranty	Axis 3-year warranty and AXIS Extended Warranty option, see axis.com/warranty
System integration		a. This product includes software developed by the OpenSSL Project for use in the OpenSSL Toolkit. (openssl.org), and cryptographic software written by Eric Young (eay@cryptsoft.com).	
Application Programming Interface	Open API for software integration, including VAPIX [®] and AXIS Camera Application Platform; specifications at axis.com AXIS Video Hosting System (AVHS) with One-Click Connection ONVIF [®] Profile S and ONVIF [®] Profile G, specification at onvif.org		
Analytics	Included AXIS Video Motion Detection, AXIS Fence Guard, AXIS Loitering Guard, AXIS Motion Guard, active tampering alarm, gatekeeper Supported AXIS Perimeter Defender, AXIS Cross Line Detection Support for AXIS Camera Application Platform enabling installation of third-party applications, see axis.com/acap		
Event triggers	Analytics, supervised external input, edge storage events, virtual inputs through API, shock detection		
Event actions	Pre- and post-alarm video buffering File upload: FTP, SFTP, HTTP, HTTPS, network share and email Notification: email, HTTP, HTTPS, TCP and SNMP trap		
Data streaming	Event data		
Built-in installation aids	Remote zoom, pixel counter, leveling assistant, autorotation		
General			
Casing	IP66-rated, powdercoated aluminum chassis Casing manufactured and certified by Spectrum Camera Solutions, LLC		
Sustainability	PVC free		

Environmental responsibility:

axis.com/environmental-responsibility