

XRI BLUE

BENITEK SYSTEMS PROJECT No.:
PR15268

QUAD BATTERY BOX
24V-20A SYSTEM

FOR CONSTRUCTION


DATE: 09/17/2018

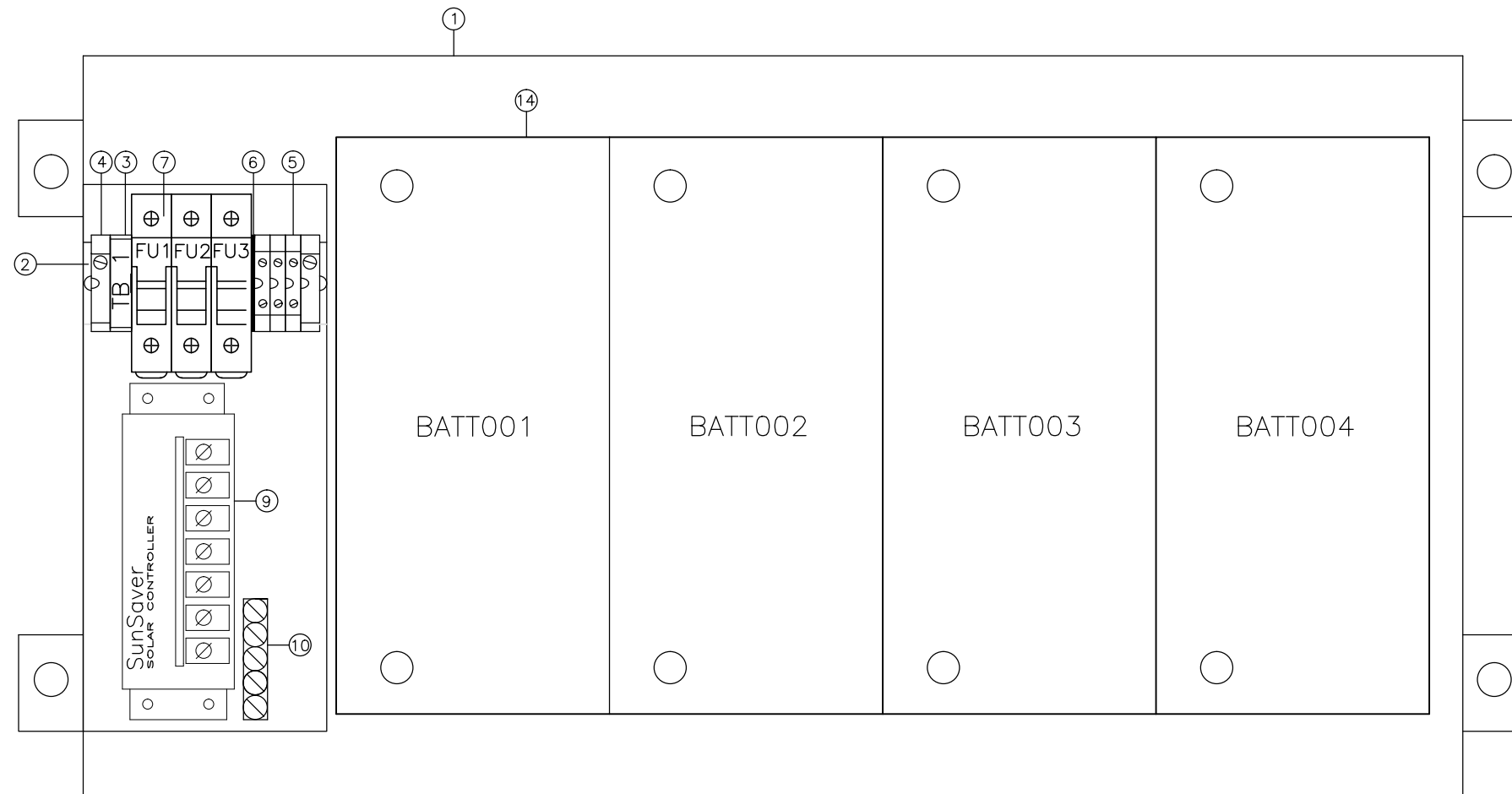
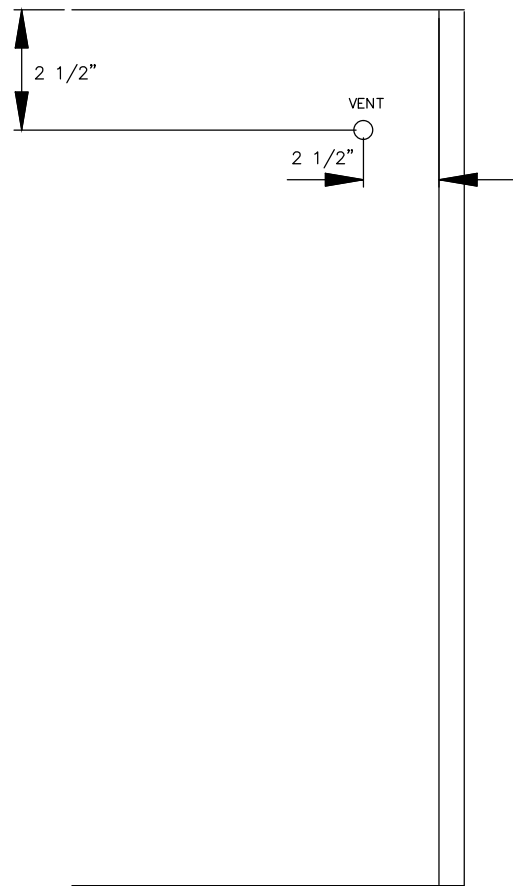
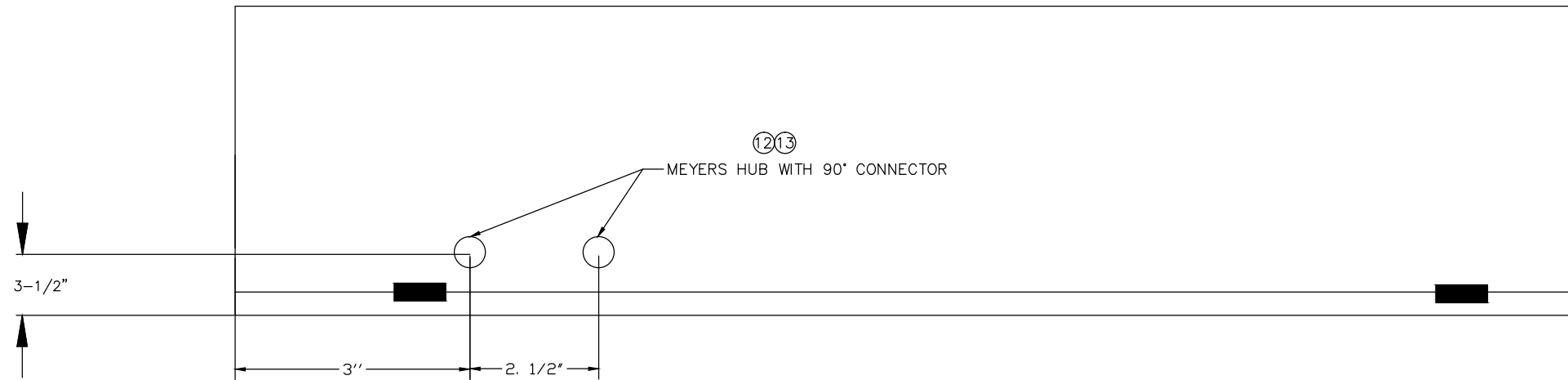


BENITEK SYSTEMS
SCADA & Telemetry Solutions

DRAWING INDEX

BENTEK DWG No.	DESCRIPTION	REV.
DWG-QBB-DI-002	DRAWING INDEX	0
DWG-QBB-BB-003	BATTERY BOX	0
DWG-QBB-ML-004	MATERIAL LIST	0
DWG-QBB-PD-005	POWER DISTRIBUTION	0


STAMP	REV	DATE	DESCRIPTION	DSG	BY	CHKD	APPR	CLIENT	BENTEK SYSTEMS PROJECT: PR15268
								XRI Blue	PROJECT DESCRIPTION QUAD BATTERY BOX 24VDC, 20A
									Sr.No. PR15268-QBB-01
									LSD
									PAGE DESCRIPTION DRAWING INDEX
									PAGE 02 OF 05
									DRAWING NO. DWG-QBB-DI-002
									REV 0
	0	09/17/2018	FOR CONSTRUCTION	RS	HS	RS	CG	PATH	O:\Engineering\Design Room\Autocad Drawings\PR15268 XRI Blue QBB\002.dwg



STAMP	REV	DATE	DESCRIPTION	DSG	BY	CHKD	APPR	CLIENT	BENTEK SYSTEMS PROJECT: PR15268	
								XRI Blue	PROJECT DESCRIPTION	
									QUAD BATTERY BOX 24VDC, 20A	
									Sr.No. PR15268-QBB-01	
									LSD	
									PAGE DESCRIPTION	PAGE 03 OF 05
									BATTERY BOX	
									DRAWING NO. DWG-QBB-BB-003	REV 0
	0	09/17/2018	FOR CONSTRUCTION	RS	HS	RS	CG	PATH	O:\Engineering\Design Room\Autocad Drawings\PR15268 XRI Blue QBB\003.dwg	

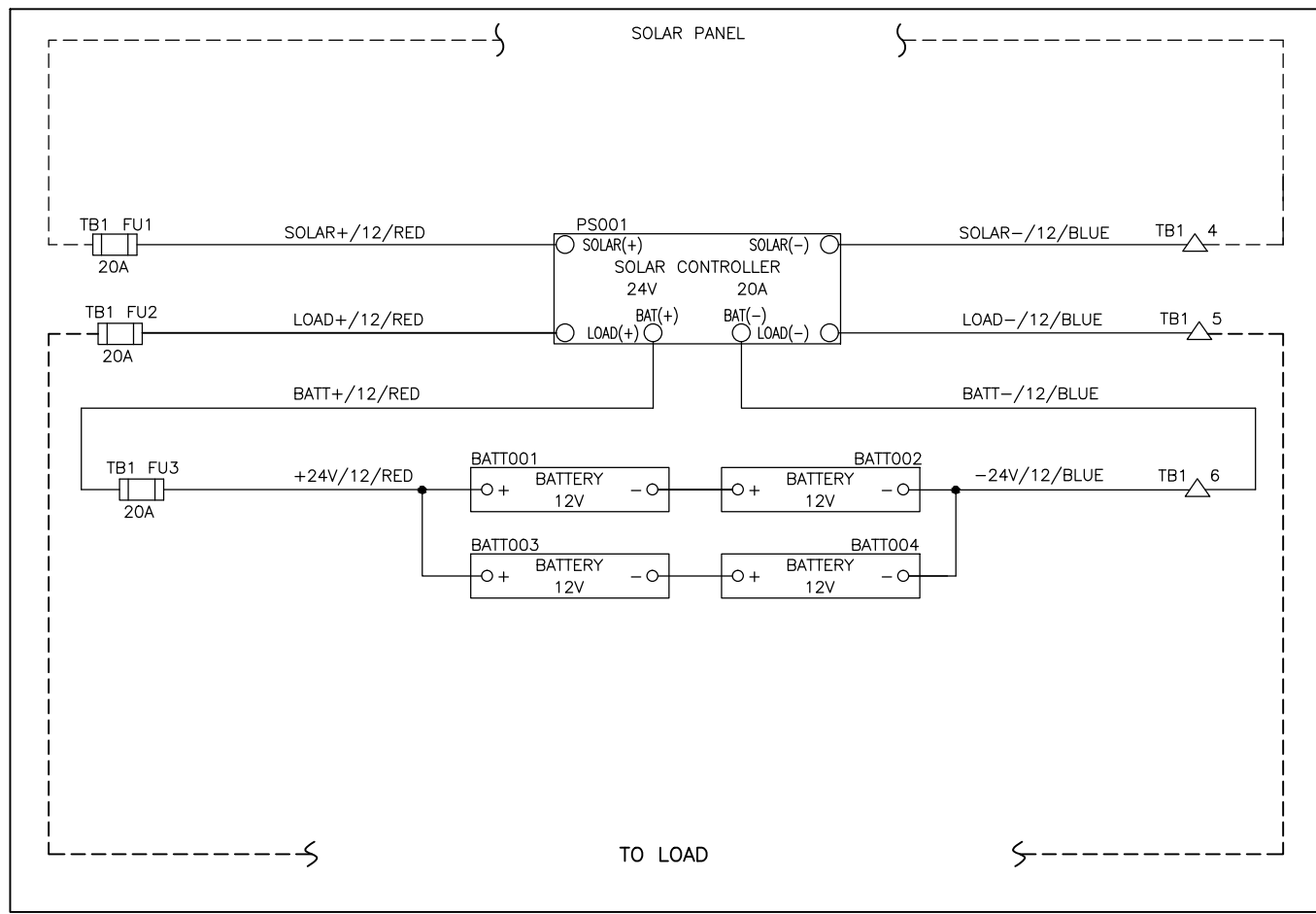
NOTES		
CONSTRUCTION NOTES	1	CLASS 1, DIV D2 - CERAMIC FUSES
	2	GENERAL AREA - GLASS FUSES
CONNECTION NOTES	1	CONTRACTOR TO VERIFY COMMUNICATION WITH BENTEK SYSTEMS (403)243-5135
	2	ALL FIELD WIRING TO COMPLY WITH C.E.C.

MATERIAL LIST					
ITEM	QTY	DESCRIPTION	MANUFACTURER	PART NUMBER	SIZE
1	1	QUAD BATTERY ENCLOSURE	SCADALink	QUAD	33"LX17WX15-1/8"H
2	1	RAIL TS35		TS 35	-
3	1	LABEL HOLDER	WEIDMULLER	1631930000	-
4	2	END STOP	WEIDMULLER	0383560000	-
5	3	FEED-THROUGH TERMINAL WDU 6	WEIDMULLER	1020200000	-
6	1	FEED-THROUGH TERMINAL ENDPLATE WAP 2.5	WEIDMULLER	1050000000	-
7	3	FUSE HOLDER 30A	COPPER BUSSMAN	CHM	-
8					
9	1	SOLAR REGULATOR 20Amps, 24 Volts	MORNINGSTAR	SS-20L-24V	-
10	1	GROUND BAR	ILSCO	N8020	-
11	1	VENT	HOFFMAN	A-NMV3	-
12	2	1/2" MYERS HUB	T&B	H050A	-
13	2	1/2" LIQUID TIGHT 90 DEGREE FLEX CONNECTOR	T&B	TNB5252	-
14	4	BATTERY -AGM12V, 105A	CONERGY	8AU1	-
15	4	BATTERY JUMPER #4AWG - 12'	BENTEK SYSTEMS	-	-

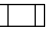


STAMP	REV	DATE	DESCRIPTION	DSG	BY	CHKD	APPR	CLIENT	BENTEK SYSTEMS PROJECT: PR15268	
								XRI Blue	PROJECT DESCRIPTION	
									QUAD BATTERY BOX 24VDC, 20A	
									Sr.No. PR15268-QBB-01	
									LSD	
									PAGE DESCRIPTION	PAGE 04 OF 05
									MATERIAL LIST	
									DRAWING NO. DWG-QBB-ML-004	REV 0
	0	09/17/2018	FOR CONSTRUCTION	RS	HS	RS	CG	PATH	O:\Engineering\Design Room\Autocad Drawings\PR15268 XRI Blue QBB\004.dwg	

501
502
503
504
505
506
507
508
509
510
511
512
513
514
515
516
517
518
519
520
521
522
523
524
525
526
527
528
529
530
531
532
533
534
535
536
537
538
539
540

24V, 20A SYSTEM



LEGEND

-  FUSED TERMINAL
-  FEED THROUGH TERMINAL
-  GROUND TERMINAL

COLOR CODE

- AC 120V:
- L BLACK
 - N WHITE
 - GND GREEN
- DC:
- +VDC RED
 - VDC BLUE

REV	DATE	DESCRIPTION	DSG	BY	CHKD	APPR	CLIENT
0	09/17/2018	FOR CONSTRUCTION	RS	HS	RS	CG	XRI Blue

BENTEK SYSTEMS PROJECT: PR15268	
PROJECT DESCRIPTION QUAD BATTERY BOX 24VDC, 20A	
Sr.No.	PR15268-QBB-01
LSD	
PAGE DESCRIPTION POWER DISTRIBUTION	PAGE 05 OF 05
DRAWING NO. DWG-QBB-PD-005	REV 0

