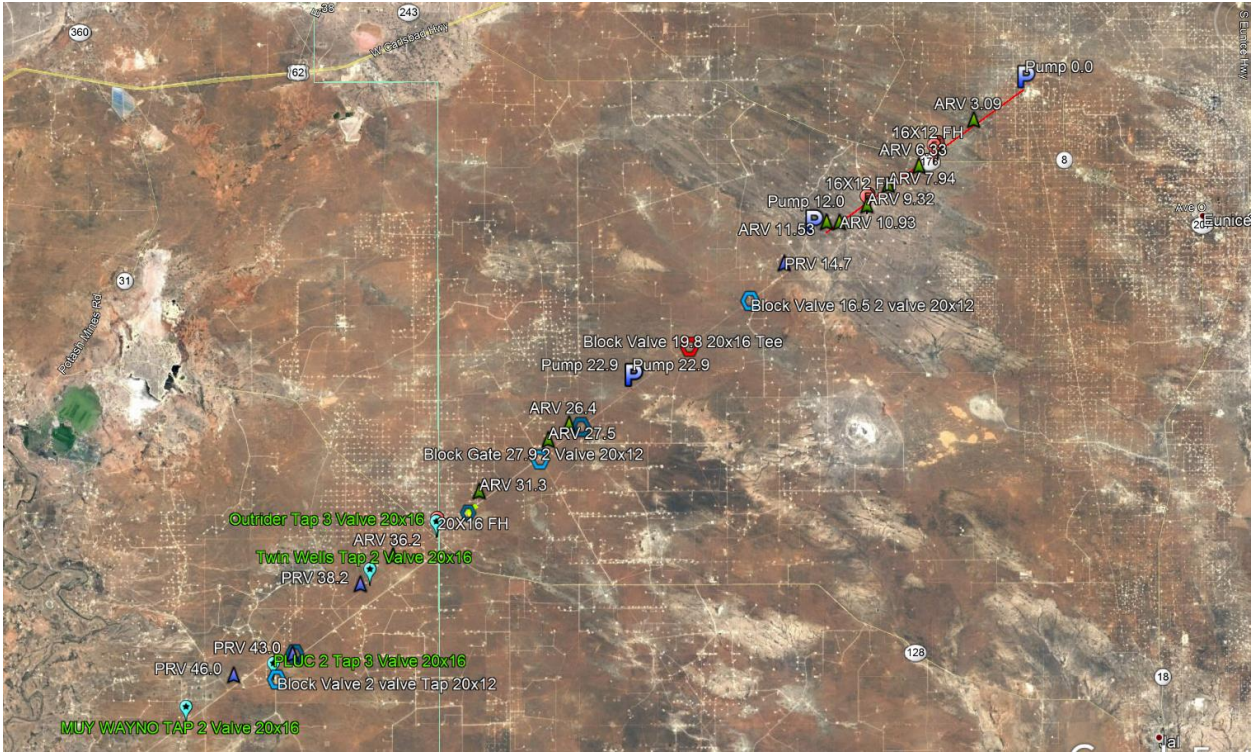
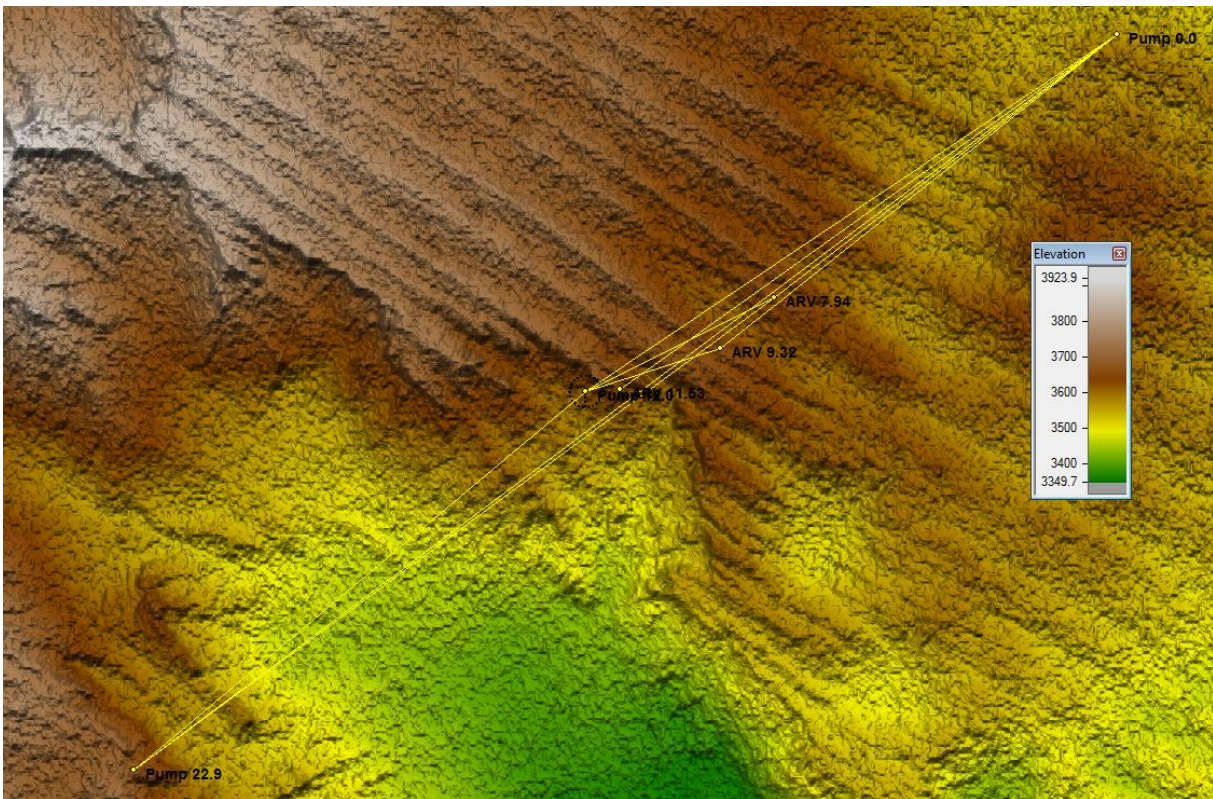


# Gambler Line



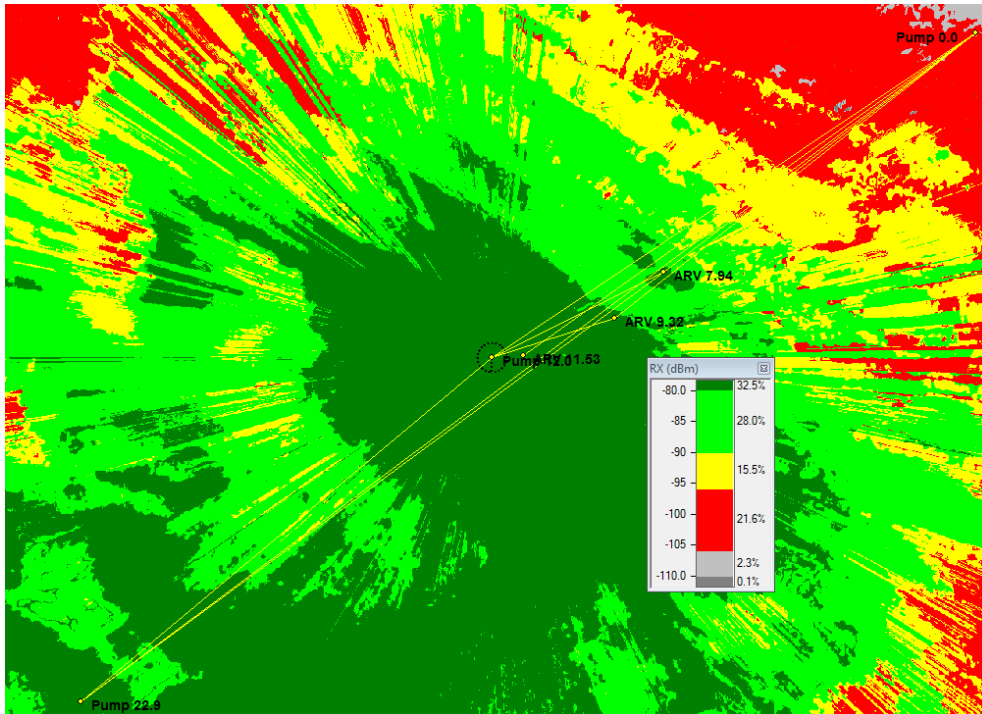
# Elevation Map





## Coverage Maps

35ft antennas (Pump 12.0 as master)



The ridgeline west of ARV 9.32 causes an elevation rise that leads to radio signal issues to Pump 0.0, a workaround is that a repeater is needed at ARV 7.94

35ft antennas (ARV 7.94 as master)

